



Powerful Solutions

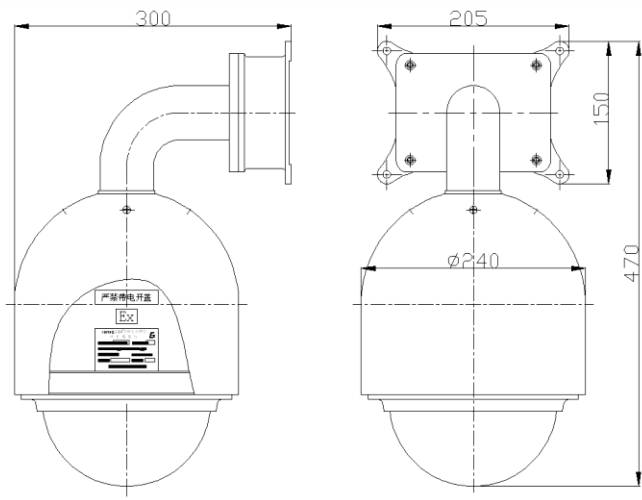


# EagleEyes CCTV

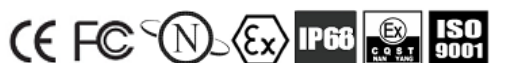
## SECURITY SOLUTIONS AND TECHNOLOGIES

### SpeedDome Anti-Explosão Aço Inox 316L ou 304

A SpeedDome Anti-Explosão EagleEyes são desenvolvidas e produzidas em aço inox 316L ou 304 de acordo com o padrão Internacional anti-explosão Exd II CT6. Este tipo de SpeedDome em aço inox pode ser utilizado em ambientes que contenham gases explosivos, tais como: Mathano, hydrogenio, óleo, gasolina, etc; e também em ambientes corrosivos tais como: Ácidos, gases químicos, e salitro (Plataformas off-shore, beira-mar, etc) Os modelos de SpeeDome em aço inox anti-explosão possuem câmera zoom integrada de 30X, 35X ou 36X de zoom; e possui grau de proteção IP68. Suportes de parede, sobrepôr ou de pendurar opcionais.



Av. República Argentina, 50 • 15º andar  
Curitiba PR 80240-210  
Tel: (041) 3342 1600 • Fax: (041) 3244 2200  
vendas@eaglevision.com.br • www.eaglevision.com.br





Powerful Solutions

# EagleEyes CCTV

## SECURITY SOLUTIONS AND TECHNOLOGIES

### Technical Specification SpeedDome Explosion-Proof

Certification Parameter	
Manufacturers Standard	IEC60079, IEC21641, GB3836-2000, GB12476.1-2000
Material	304 / 316 / 316L Stainless steel
Configuration Mode	Integrated Dome Shape
Explosion-proof Mark	Exd II CT6 / DIP A20 TA,T6
IP	IP68
Operating Temperature	-45°C~60°C
Humidity	≤95%
Cable Entries	1 × G3/4"Explosion-proof cable entry , Dia. of inner hole Φ15
Mechanical Features	
Back Box Material	304 / 316 / 316L Dual stainless steel
Electric Motor	MAE Accurate step motor, Preset resolution 0.02°
Transmission Structure	Electric conduction link, High strength aluminum alloy (LY12) gear with synchronous belt
Weight	12 Kg
Control Mode	
Communication	Multi-protocol (PELCO-D, PELCO-P etc. ), RS485
Address Range	1-255 (Soft address edit)
Bit Rate	2400 / 4800 / 9600 bps
OSD	On / Off, English Menu characters overlapping
Pan/Tilt	
Preset Positions	128
Tour (SEQ)	8 Tours (Each tour with 16 / 8 presets, preset speed and dwell time can be set)
Auto Pan	8 P2P tours ( between 2 presets)
Pan / Tilt Range	Pan: 360° Continuously; Tilt: -2° ~ 90° (180° Auto Flips)
Pan / Tilt Speed	Pan: 0.2°~ 240°/s Tilt: 120°/s; (High-Speed) Pan: 0.2°~ 110°/s Tilt: 60°/s; (Mid-Speed)
Alarm	8 Alarm inputs、 2 Auxiliary outs
Camera	
Optional Camera	Zoom Module 30X, 35X and 36X (See next page for details)
Power Supply	
Voltage	12V DC / 220V AC
Current	2A / 0.5A

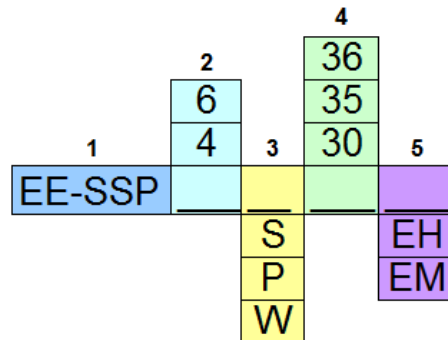
## SECURITY SOLUTIONS AND TECHNOLOGIES

### Technical Specification Integrated Zoom Module

Model number		Zoom Module 30X Day/Night		Zoom Module 35X Day/Night		Zoom Module 36X Day/Night	
Signal system		NTSC	PAL	NTSC	PAL	NTSC	PAL
Picture elements		~380K	~440K	~380K	~440K	~380K	~440K
Horizontal resolution		520TVL		540TVL		540TVL	
Image sensor		1/4 type IT CCD (EX view HAD)		1/4 type EXview HAD CCD		1/4 type EXview HAD CCD	
Optical Zoom		30X		35X		36X	
Digital Zoom		10X		10X		12X	
Lens		F=3.6mm~108mm, F=1.4~3.0		f=3.5mm~120mm, F=1.6~3.8		f=3.4mm~122.4mm F=1.6~4.5	
Angle of view		58.2°(W) to 2.1°(T)		54.2°(W) to 2.2°(T)		57.8°(W) to 1.7°(T)	
synchronization		Internal/External(V-lock)		Internal/External(V-lock)		Internal/External(V-lock)	
Min. illumination	Color B/W	0.02Lux/1/4sec	0.02Lux/1/3sec	0.02Lux/1/4sec	0.02Lux/1/4sec	0.02Lux/1/4sec	0.02Lux/1/4sec
		0.004Lux (DSS On)	0.004Lux (DSS On)	0.003Lux (DSS On)	0.003Lux (DSS On)	0.003Lux (DSS On)	0.003Lux (DSS On)
S/N Ratio		>50dB		>52dB		>52dB	
BLC		ON/OFF		ON/OFF		ON/OFF	
Shutter speed		1/1 to 1/10000sec	1/1 to 1/10000sec	1/4 to 1/10000sec	1/3 to 1/10000sec	1/4 to 1/10000sec	1/3 to 1/10000sec
Wide Dynamic Range (WDR)		Yes		Yes		Yes	
Digital Image Stabilizer (DIS)		Yes		Yes		Yes	
White balance		Auto/Manual		Auto/Manual		Auto/Manual	
Gain Ctrl		Auto/Manual		Auto/Manual		Auto/Manual	
Iris Ctrl		Auto/Manual		Auto/Manual		Auto/Manual	
Focus Ctrl		Auto/Manual		Auto/Manual		Auto/Manual	

### Ordering and Model Information

1. SpeedDome Stainless Steel EagleEyes
2. Type of stainless steel (4=304 or 6=316L)
3. S = Ceiling; P = Pendent, W = Wall Mount
4. Camera module built-in (30X, 35X or 36X)
5. EM = Explosion proof Medim-Speed P/T  
EH = Explosion proof High-Speed P/T



CERTIFICATE ISO9001



CERTIFICATE EXPLOSION PROOF

### Certificates Explosion-Proof

#### Standards :

- IEC60079-0:2004 - Electrical apparatus for explosive gas atmospheres – Part 0: General requirements
- IEC60079-1:2003 - Electrical apparatus for explosive gas atmospheres – Part 1: Flameproof enclosure “d”
- GB3836.1-2000 - Electrical apparatus for explosive gas atmospheres – Part 0: General requirements
- GB3836.2-2000 - Electrical apparatus for explosive gas atmospheres – Part 1: Flameproof enclosure “d”
- Q/LDX001-2007 - Enterprise standards for electrical apparatus for explosive gas atmospheres
- EN50014 ff - Electrical apparatus for explosive gas atmospheres (Europe Union)

#### Marking: Exd II CT6

(C15888, C15889, C15890) Exd II CT6.

Approved by CNEC/CQST Class I Division 1, Groups B, C, and D.

Certified by EC-TYPE EXAMINATION, KEMA 04ATEX2045X, II 2G EExd II CT6, IIC2D T180 degree centigrade.