



Powerful Solutions

# EagleEyes

## Wireless LAN-Radio

### SECURITY SOLUTIONS AND TECHNOLOGIES

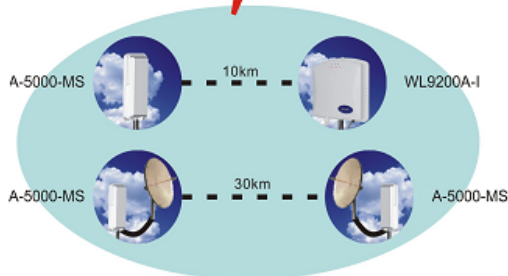
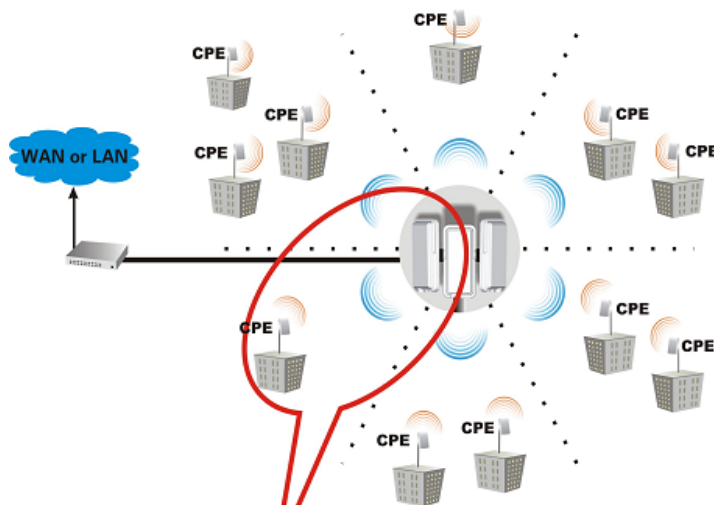
#### 5.8GHZ Central Station 54Mbps Wireless radio

The unprecedented TDM-QoS-enabled, point-to-multipoint AP builds your immense and secure prospect

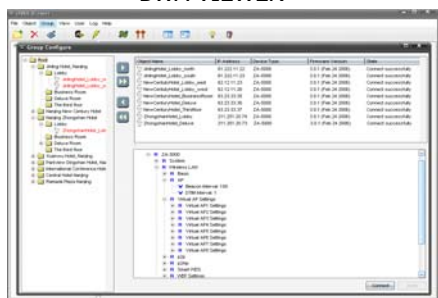
EagleEyes EE-A5000-MS is designed as a 5Ghz powerful central station for long-distance omni-directional coverage, composed of 6 independent sectors to cover 360°.

It offers two antenna solution options: built-in 16dBi 60° panel antenna and N-Type interface for high-gain external antennas.

EE-A5000-MS



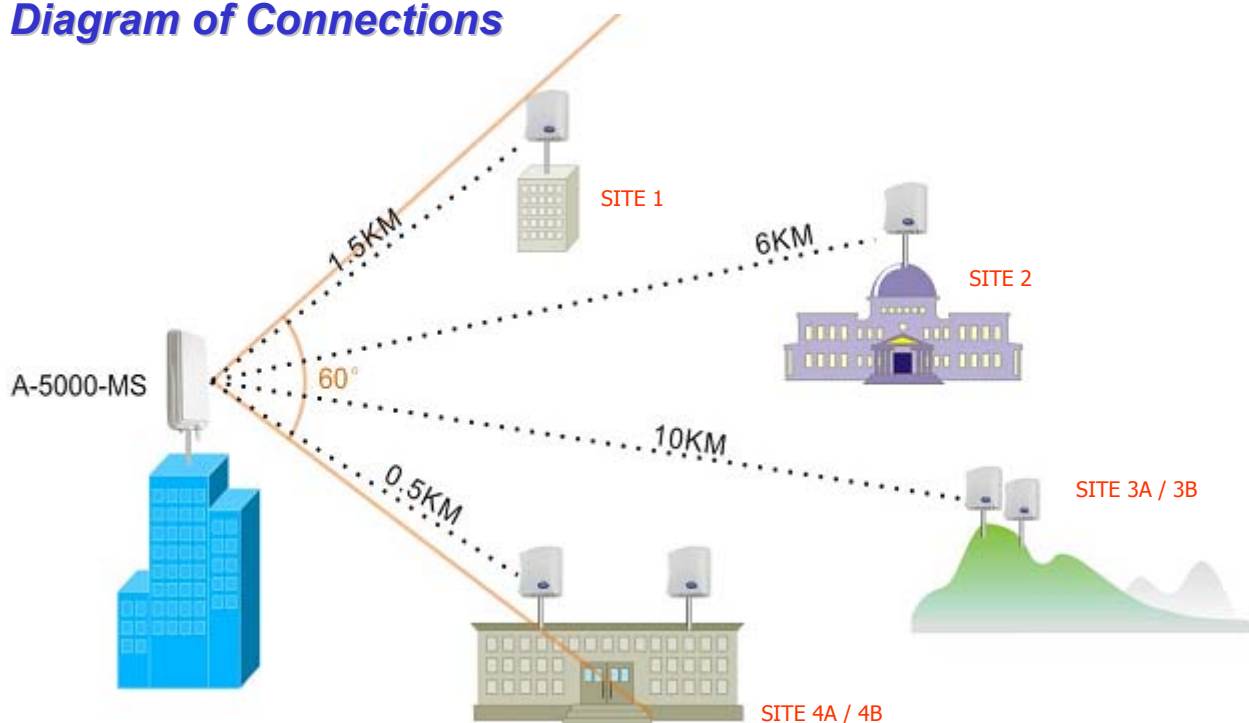
BWA VIEWER



Av. República Argentina, 50 • 15° andar  
Curitiba PR 80240-210  
Tel: (041) 3342 1600 • Fax: (041) 3244 2200  
vendas@eaglevision.com.br • www.eaglevision.com.br



## Diagram of Connections



## Features

### 1. Real long-distance 360° coverage.

With Built-in 16dBi 60° Panel Antenna, 60° (horizontal) × 12° (vertical), coverage radius is up to 10km.

With high-gain external antennas, EE-A5000-MS can build up link with clients 30km far away.

### 2. Centralized Network Management Software (BWA Viewer)

Can enable you, in one location, to configure central station and all remote CPEs easily.

### 3. Desirable CPE number: 15\*6

EE-A5000-MS can work with 90 remote CPEs.

### 4. Effectively transmit such diversified data as audio and video

Apply TDM-QoS, WMM-Qos, enabling transmit such diversified data as audio and video, transparently and reliably.

Point to 6 Point	TDM OFF (Throughput)	TDM ON (Throughput)
Site 1	0.025Mbps	2.466 Mbps
Site 2	<0.01 Mbps	1.833 Mbps
Site 3A	<0.01 Mbps	1.96 Mbps
Site 3B	<0.01 Mbps	1.779 Mbps
Site 4A	6.6Mbps	2.968Mbps
Site 4B	13.4Mbps	2.775 Mbps



# 5.8GHz Central Station 54Mbps Wireless Radio with Antenna

## Feature

Compliant Standards	IEEE 802.11a IEEE 802.3u IEEE 802.3af
Support Network Protocol	TCP/IP IPX NetBEUI
Data Transfer Rate	Best / 54 / 48 / 36 / 24 / 18 / 12 / 9 / 6 Mbps
AP Mode	Support
WDS	Support(TBD)
IP Routing	Support
Any IP	Support
DHCP Client	DHCP Server, DHCP Client
Super A	Support
Spanning Tree	Support
Power Control	Support
Link Test	Support
Wireless Station List	Support
Select Antenna Type by Web Management	Support(Next Version)
TDM-QoS	Support
WMM-QoS	Support(Next Version)
Regatta	Support(Next Version)
Surge Arrester	Support
NAT	Support(Next Version)

## Interface

LAN	One 10/100-BaseTX RJ-45 Ethernet Port
Antenna Type (Built-in)	built-in 16dBi 60 panel antenna (60°×12°)
Antenna Type (External)	One N type(Female) interface
Default Button	Support
Ground Interface	Support

## Electricity

POE (Power over Ethernet)	Yes
Output Power	48V DC/0.83A, Compatible with IEEE 802.3af
Power Consumption	200mA@48V

## Radio

Modulation Type	America: 5.15GHz~5.35GHz; 5.725GHz~5.825GHz
	Europe: 5.47GHz~5.725GHz
	China: 5.725GHz~5.850GHz
	Japan: 5.15GHz~5.25GHz
RF Output Power	19dBm (±1.5dB)+ 16dB
Sensitivity	54Mbps: ≤-70dBm 48Mbps: ≤-71dBm 36Mbps: ≤-75dBm 24Mbps: ≤-79dBm 18Mbps: ≤-82dBm 12Mbps: ≤-84dBm 9Mbps: ≤-86dBm 6Mbps: ≤-87dBm



# 5.8GHz Central Station 54Mbps Wireless Radio with Antenna

## Management

Secure Web Management	Support
SNMP MIB	Support
Telnet	SSH
Bandwidth Control	Support (Next Version)
F/W Upgrade	Web / TFTP
Backup Settings	Web / FTP
BWA Viewer	Support

## Security

WEP Encryption	64 / 128 / 152 bits
Radius	Support
802.1x	Support
WPA	Support
WPA-PSK	Support
WPA2	Support (Next Version)
Access Control	Support
SSID Broadcast	Hidden AP
Wireless Client Separator	Support
Multiple BSSID	Support (Next Version)
VLAN	Multi BSSID(Next Version)

## Appearance

Dimensions	376mm×182mm×60.5mm
Unite Weight	1.5kg

## Specifications

Working Temperature	-20~65°C
Store Temperature	-20~80°C
Waterproof Grade	IP65

## Package Contents

- Wireless Device
- CD
- Power Adapter
- DC-Injector
- Power Cable
- Fixed Settings
- Installation Guide

