



Powerful Solutions

# EagleEyes

## Wireless LAN-Radio

### SECURITY SOLUTIONS AND TECHNOLOGIES

## CPE 54Mbps 5Ghz Wireless with 18dB Antenna

### 54/108Mbps Outdoor Wireless Inter-building 5Ghz AP/Station with high-gain 18dB internal antenna

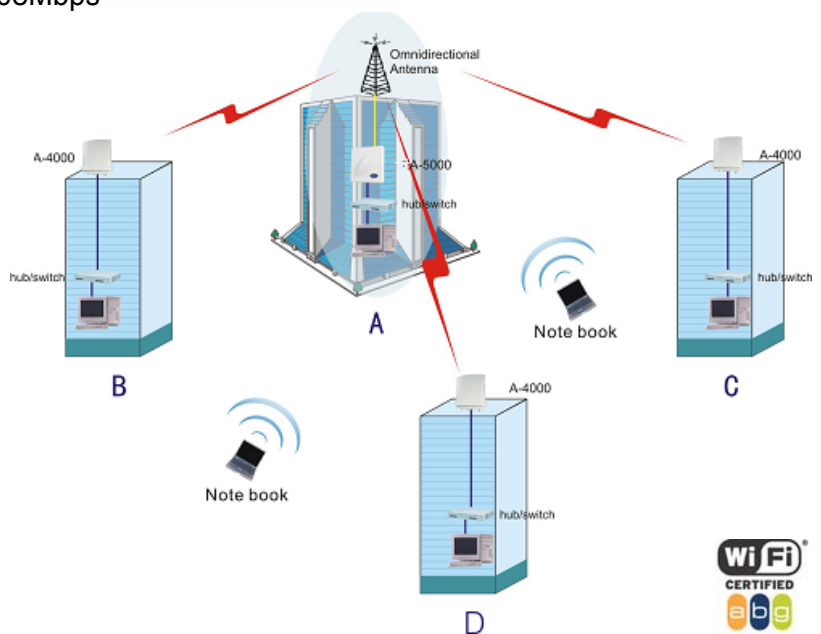
EagleEyes EE-A4000 is designed as remote client of AP, works at 5GHz, integrated with 18dBi panel antenna, equipped with POE, link quality LED. Clients can quickly build up stable Point to Multipoint wireless broadband access system for "Last miles access" at low cost.

- Access Point, Inter-building Bridge, and Station Adapter
- Support TCP/IP, SPX/IPX, NETBEUI
- Point-to-Point and Point-to-Multipoint Bridging Modes
- Support Router function
- Built in 18dBi Panel Antenna

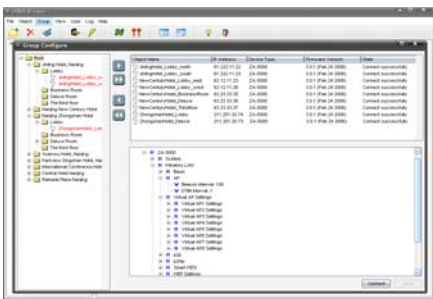
### Additional Features

- High transmission speed up to 54/108Mbps
- RoHS
- Signal Status Display In Web
- Signal Status Display by Led Line
- TDM-QoS
- PoE

EE-A4000-CPE



BWA VIEWER



Av. República Argentina, 50 • 15° andar  
 Curitiba PR 80240-210  
 Tel: (041) 3342 1600 • Fax: (041) 3244 2200  
 vendas@eaglevision.com.br • www.eaglevision.com.br



# EE-A4000CPE 54Mbps Wireless LAN 5Ghz with 18dB Antenna

## Feature

Compliant Standards	IEEE 802.11a IEEE 802.3u IEEE 802.3af
Support Network Protocol	TCP/IP IPX NetBEUI
Data Transfer Rate	Best / 54 / 48 / 36 / 24 / 18 / 12 / 9 / 6 Mbps
Working Mode	Station, WDS
Signal Status Display In Web	Support
Signal Indicators	-92 <= dBm < -87 0LED ON -87 <= dBm < -67 1LED ON -67 <= dBm < -52 2LED ON -52 <= dBm < -47 3LED ON -47 <= dBm < -45 4LED ON -45 <= dBm <= 10 5LED ON
Firmware Upgrade	WEB,TFTP,FTP
Super Mode	Support
TDM-QoS(Client)	Support
NAT	Support
Linktest	Support
IP and MAC Access Control	Support

## Interface

LAN	One 10/100-BaseTX RJ-45 Ethernet Port
Antenna Type (Built-in)	built-in 18dBi antenna (12°×16°)
Antenna Type (External)	One N type(Female) interface
Default Button	Support
Ground Interface	Support
Led	1-POWER,1-WLAN,1-LAN,5-Signal Indicator

## Electricity

POE (Power over Ethernet)	Yes
Output Power	48V DC/0.83A, Compatible with IEEE 802.3af
Power Consumption	200mA@48V

## Radio

Modulation Type	America: 5.15GHz~5.35GHz; 5.725GHz~5.825GHz Europe: 5.47GHz~5.725GHz China: 5.725GHz~5.850GHz Japan: 5.15GHz~5.25GHz
RF Output Power	16dBm (±1dBm)+ 18dBi
Sensitivity	54/108 Mbps: ≤ -72dBm 48 Mbps: ≤ -73dBm 36 Mbps: ≤ -77dBm 24 Mbps: ≤ -81dBm 18 Mbps: ≤ -84dBm 12 Mbps: ≤ -86dBm 9 Mbps: ≤ -88dBm 6 Mbps: ≤ -90dBm



# EE-A4000CPE 54Mbps Wireless LAN 5Ghz with 18dB Antenna

## Management

Secure Web Management	Support
SNMP MIB	Support
SSH	Support
CLI	Support
BWA Viewer	Support

## Security

WEP Encryption	64 / 128 / 152 bits
WPA-PSK	Support

## Appearance

Dimensions	292mm×288mm×84mm
Unite Weight	1.4kg

## Specifications

Working Temperature	-20~65℃
Store Temperature	-20~80℃
Waterproof Grade	IP65

## Package Contents

- Wireless Device
- Power Cable
- CD
- Fixed Settings
- Power Adapter
- Installation Guide
- DC-Injector

