



Powerful Solutions

EagleEyes CCTV

SECURITY SOLUTIONS AND TECHNOLOGIES

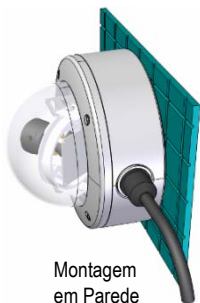
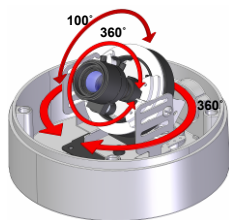
Day/Night Dome 540 Lines Vandal-Proof

- Day & Night 1/3" SONY Super HAD CCD (DSP Samsung)
- High Resolution up to 540 TV Lines (Color mode)
- Low Lux at 0.0Lux (IR On)
- Varifocal lens Auto-Iris 2.8-11mm or 3.8-9mm Integrated
- DNR (Digital Noise Reduction)
- Passive UTP output optional (Mod. EE-D524U-VP49)
- Motion Detection and Private Mask
- Other Functions: BLC, ATW, AGC, Sharpness, Flickerless, Mirror, Line-Lock, DNR, SensUP, IP66 NEMA4X

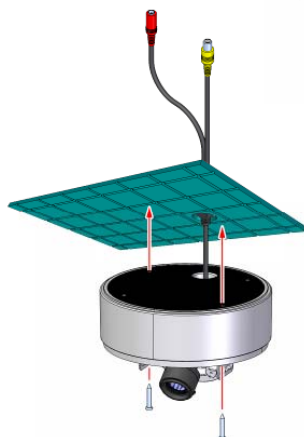


3-AXIS GIMBAL 360* 100* BRACKET

IR Model Design



Montagem em Parede



Montagem em Teto

Technical Specs	EE-D524-VP211 (2.8~11mm lens) / EE-D524-VP49 (3.8~9mm)
Pick up Element	1/3" Day&Night Sony Super HAD CCD
DSP chipset	Samsung Winner III DSP Technology
Number of Pixels	NTSC: 811x508 Total pixels / 768x494 Effective pixels
Horizontal Frequency	NTSC: 15.734 KHz
Vertical Frequency	NTSC: 60Hz
Synchronism	Internal / Line-Lock
Resolution	540 TV Lines (Color) / 570 TV Lines (BW mode)
Scanning System	2:1 Interlace
Auto Electronic Shutter	ESL, manual, Flickerless - 1/60~1/120,000 sec.
Auto White Balance	ATW, AWC, Manual (1,800~10,500K range)
DNR	Low / Mid / High / OFF
Back Light Compensation	Low / Mid / High / OFF
Automatic Gain Control	Low / Mid / High / OFF (06dB~42dB)
Private Mask	4 areas programmable
SensUP	Up to 32X (2X~128X)
Sharpness	ON (0~31) / OFF
Motion Detection	4 areas programmable
Signal Noise Ratio	>50dB
Minimum Illumination	0.3 Lux at F1.2 (Day) / 0.002 Lux (sensup) / 0.0Lux (IR On)
Protection	IP66 NEMA4X Water-proof / Vandal-proof poly carbonate cover
Power supply	DC12V (12VDC/24VAC dual voltage optional)
Lens and Mount	Varifocal AUTO-IRIS DC 2.8-11mm or 3.8-9.0mm
UTP Output	Passive UTP connector (Mod. EE-D524U-VP49)
Power Consumption & LED	355mA / Power LED indicator
Camera ID	ON / OFF
Operating Environment	(-)30 ~ (+)60
Dimension	100(H) × 145(W) (mm)



Av. República Argentina, 50 • 15° andar
Curitiba PR 80240-210
Tel: (041) 3342 1600 • Fax: (041) 3244 2200
vendas@eaglevision.com.br • www.eaglevision.com.br

