



Powerful Solutions

EagleEyes CCTV

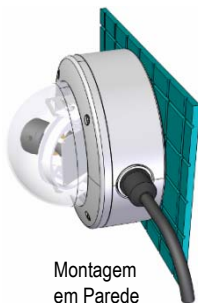
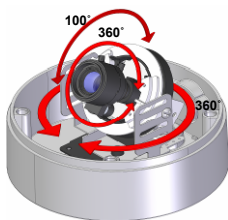
SECURITY SOLUTIONS AND TECHNOLOGIES

Day/Night Dome 540 Lines Vandal-Proof

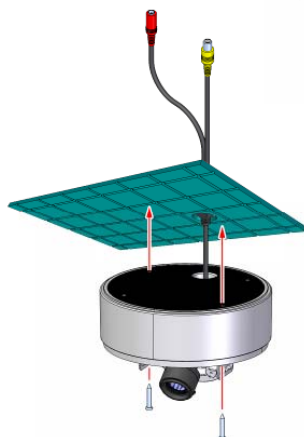
- Day & Night 1/3" SONY Super HAD CCD (DSP Samsung)
- High Resolution up to 540 TV Lines (Color mode)
- Low Lux at 0.01 F1.2
- Varifocal lens Auto-Iris 2.8-11mm (2.8-12 or 3.8-9 option)
- Passive UTP output optional (Mod. EE-D514U-VP49)
- Motion Detection and Private Mask
- Other Functions: OSD, BLC, ATW, AGC, Flickerless, Mirror, Line-Lock, Camera ID, IP66 NEMA4X
- Dual voltage optional (12VDC/24VAC)



- 3-AXIS GIMBAL 360° / 100° BRACKET



Montagem em Parede



Montagem em Teto

Technical Specs	EE-D514S-VP211 (2.8-11mm) / EE-D514S-VP49 (3.8-9mm)
Pick up Element	1/3" Day&Night Sony Super HAD CCD
DSP chipset	Samsung Winner III DSP Technology
Number of Pixels	NTSC: 811x508 Total pixels / 768x494 Effective pixels
Horizontal Frequency	NTSC: 15.734 KHz
Vertical Frequency	NTSC: 60Hz
Synchronism	Internal / Line-Lock
Resolution	540 TV Lines (Color) / 570 TV Lines (BW mode)
Scanning System	2:1 Interlace
OSD Setup	Yes
Auto Electronic Shutter	ESL, manual, Flickerless - 1/60~1/120,000 sec.
Auto White Balance	ATW, AWC, Manual (1,800~10,500K range)
Back Light Compensation	Low / Mid / High / OFF
Automatic Gain Control	Low / Mid / High / OFF (06dB~42dB)
Private Mask	4 areas programmable
Sharpness	ON (0~31) / OFF
Motion Detection	4 areas programmable
Signal Noise Ratio	>50dB
Minimum Illumination	0.3 Lux at F1.2 (Day) / 0.01 Lux (Night mode)
Protection	IP66 NEMA4X Water-proof / Vandal-proof poly carbonate cover
Power supply	DC 12V (12VDC/24VAC dual voltage optional)
Lens and Mount	Varifocal Auto iris DC 2.8-11mm (2.8-12 or 3.8-9.0mm option)
UTP Output	Passive UTP connector (Mod. EE-D514U-VP49)
Power Consumption & LED	355mA / Power LED indicator
Camera ID	ON / OFF
Operating Environment	(-)30 ~ (+)60
Dimension	100(H) x 145(W) (mm)
Weight	DC Version: 420g / DC/AC Version: 610g



Av. República Argentina, 50 • 15° andar
 Curitiba PR 80240-210
 Tel: (041) 3342 1600 • Fax: (041) 3244 2200
 vendas@eaglevision.com.br • www.eaglevision.com.br

