



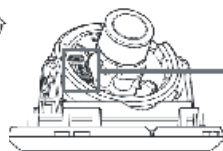
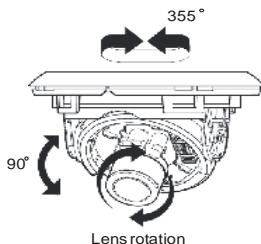
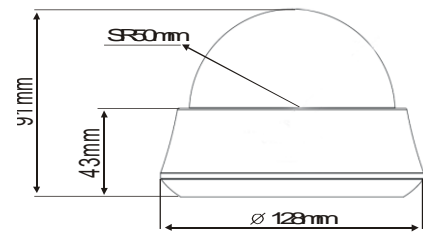
Powerful Solutions

EagleEyes CCTV

SECURITY SOLUTIONS AND TECHNOLOGIES

Dome Day&Night Varifocal 600 Lines

- Mini dome day/night function (IR Optional) with 1/3" SONY HD CCD.
- Furnished with VARIFOCAL Auto-Iris Lens 3.5-8, 2.6-6.0 or 2.8-10mm.
- Resolution at 600 lines and low light @ 0.02lux (Color) / 0.005 (BW)
- Flickerless (FKL), Auto Gain Control (AGC)
- Auto White Balance (AWB) 3200~10000K.
- Back Light Compensation (BLC)
- 3D bracket provide 3 rotation angle. Ceiling or Wall Mount



Model	EE-D600H-VF / EE-D600H-VFIR (IR 24 LEDs)
Signal System	NTSC : 525 Lines
Scanning System	2:1 Interlace
Scanning Frequency(H)	15.734 KHz
Scanning Frequency(V)	59.94 Hz
Image Sensor	1/3" SONY HD CCD - DSP
Total/Effective Pixels	811x508 pixels
S/N Ratio	More than 50dB(AGC Off)
Resolution	Horizontal : 600 TV Lines (Day) / 670 Lines (Night)
Video Output Level	1.0 Vp-p (75 Ohms, Composite)
Lens	AI 3.5-8mm (EE-D622H-VF38), 2.6-6.0mm (...VF26), 2.8-10.0mm (...VF28)
Sync System	Internal/Line-lock
Sensitivity	0.02 lux (Color) ~ 0.005 Lux (BW) ~ 0.0 Lux (IR Model 24LEDs)
Flickerless	ON/OFF switch
White Balance	Auto (3200~10000K)
AGC	ON/OFF switch
BLC	ON/OFF switch
Input/Output Connector	BNC / DC jack
Color case	White
Mirror Function	ON/OFF switch
Power Consumption	12VDC or Dual voltage 12VDC/24VAC
Dome Size	120 x 74mm / 3D bracket
Weight	Approx. 225g



Av. República Argentina, 50 • 15° andar
 Curitiba PR 80240-210
 Tel: (041) 3342 1600 • Fax: (041) 3244 2200
 vendas@eaglevision.com.br
 www.eaglevision.com.br

